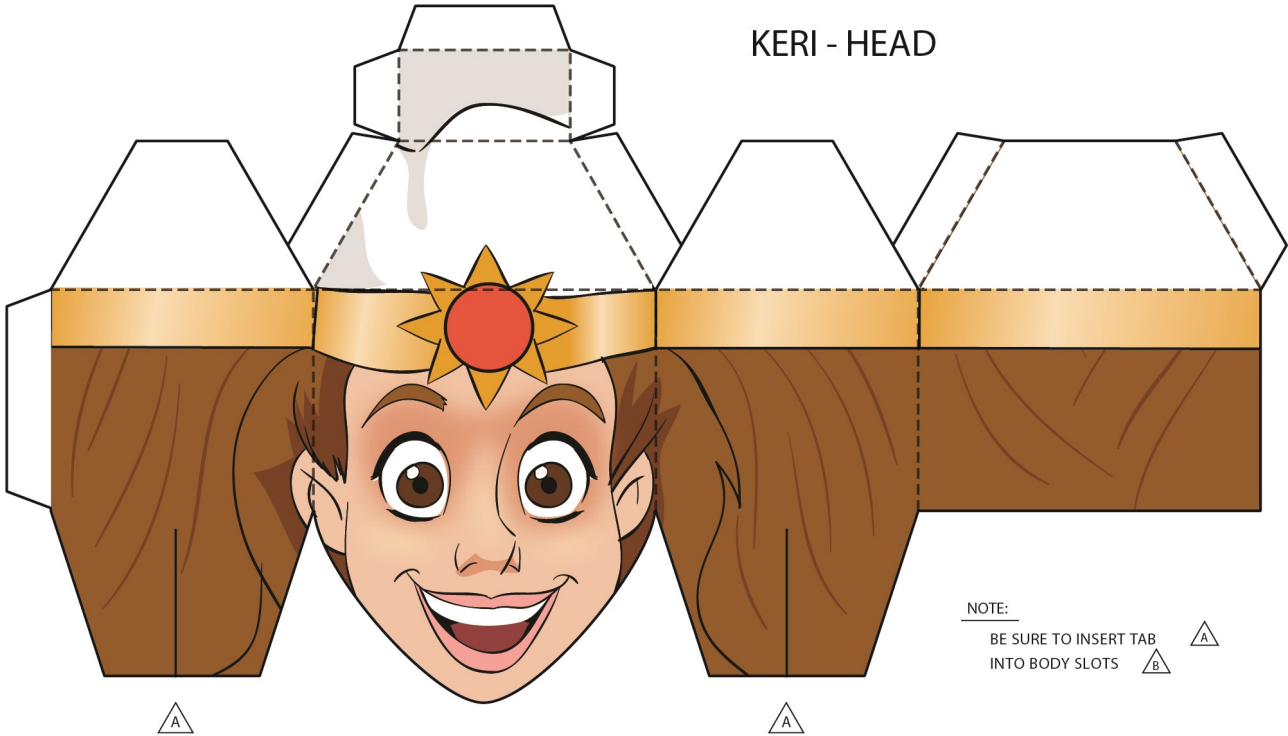


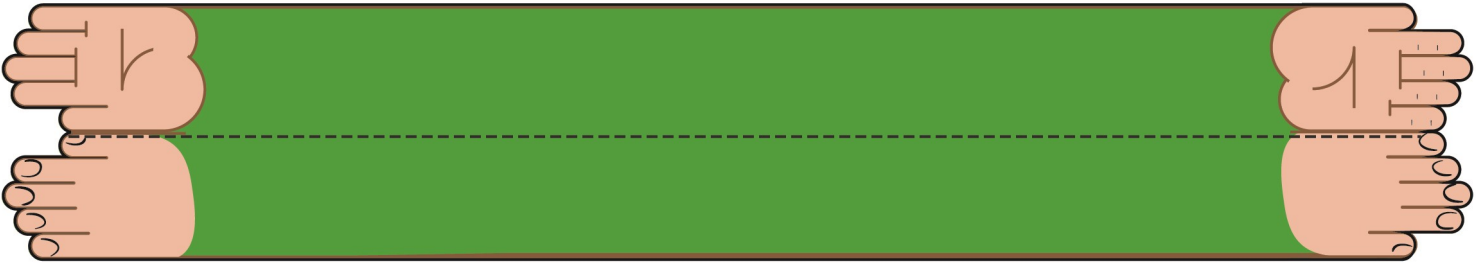


KERI - HEAD



NOTE:
BE SURE TO INSERT TAB  INTO BODY SLOTS 

KERI - ARMS

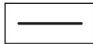

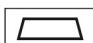




NOTE:
FASTEN THE ARMS WITH A
PIECE OF DOUBLE-SIDED TAPE
FOR MAXIMUM SATISFACTION.

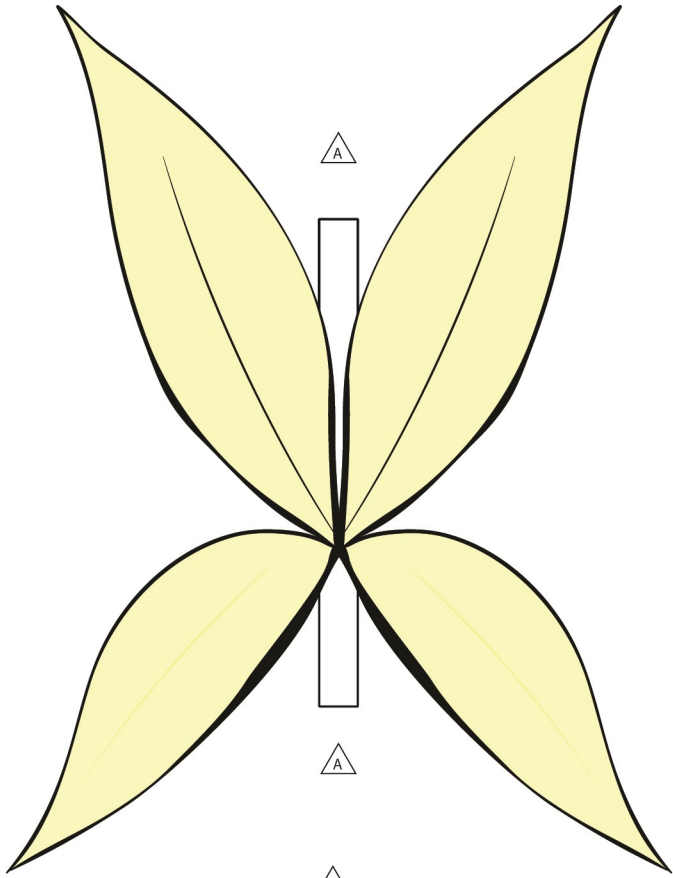
FILE NAME: Keri Paper Hero 1-2

THE SUPER DENTISTS
KERI PAPER HERO
PAGE 1/2

ASSEMBLY INSTRUCTIONS	
1	CUT OUT THE PIECES WITH SCISSORS OR CUTTING KNIFE
2	SCORE AND FOLD ALONG THE FOLDING LINES
3	USE GLUE OR DOUBLE-SIDED TAPE TO FASTEN THE TABS
4	ASSEMBLE THE PAPER HERO, APPLY THE WINGS
5	VISIT WWW.THESUPERDENTISTS.COM FOR MORE FUN AND GAMES
6	

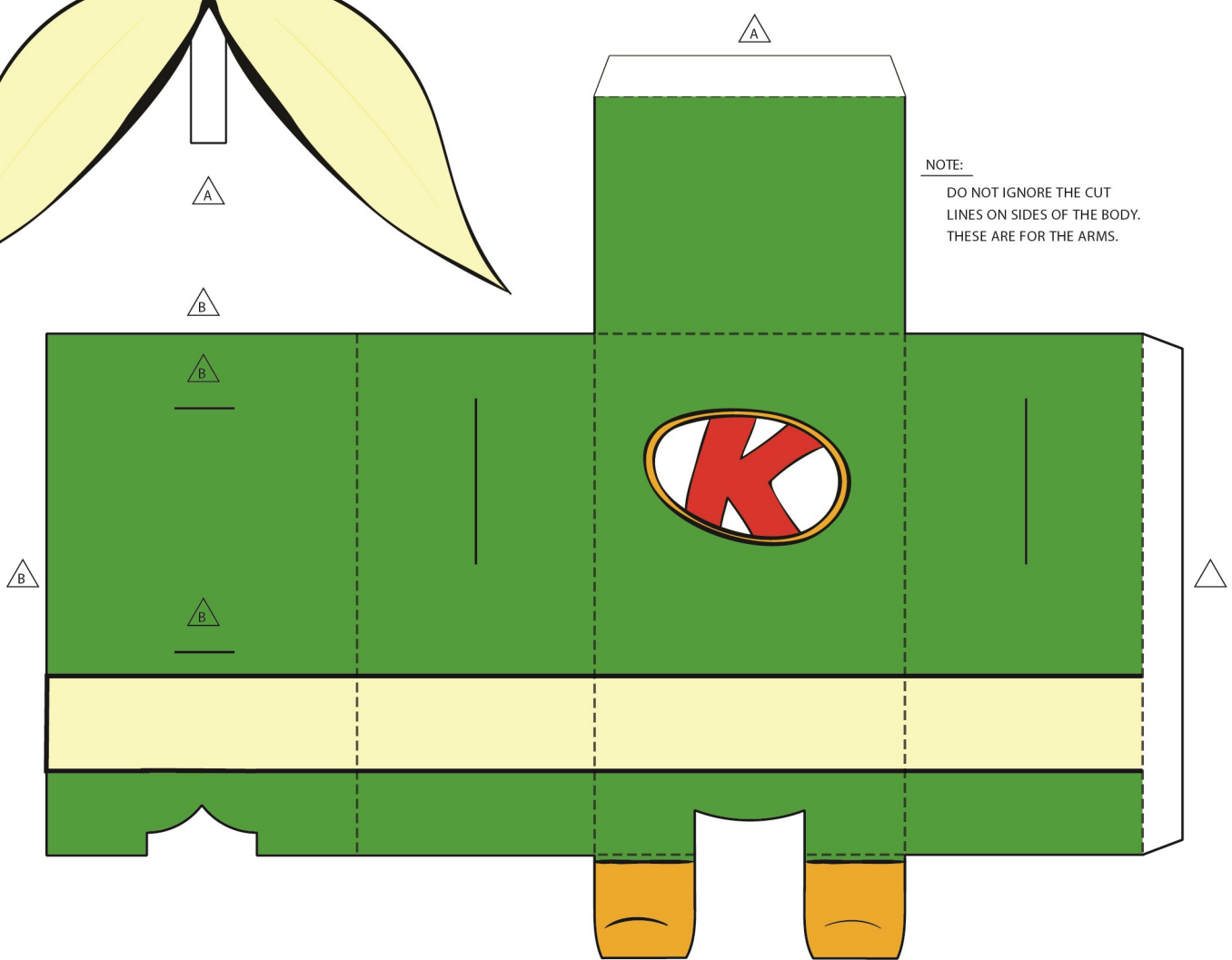
-  - CUT LINE
-  - FOLD LINE
-  - GLUE OR TAPE
-  - HAIR
-  - SKIN

KERI - WINGS



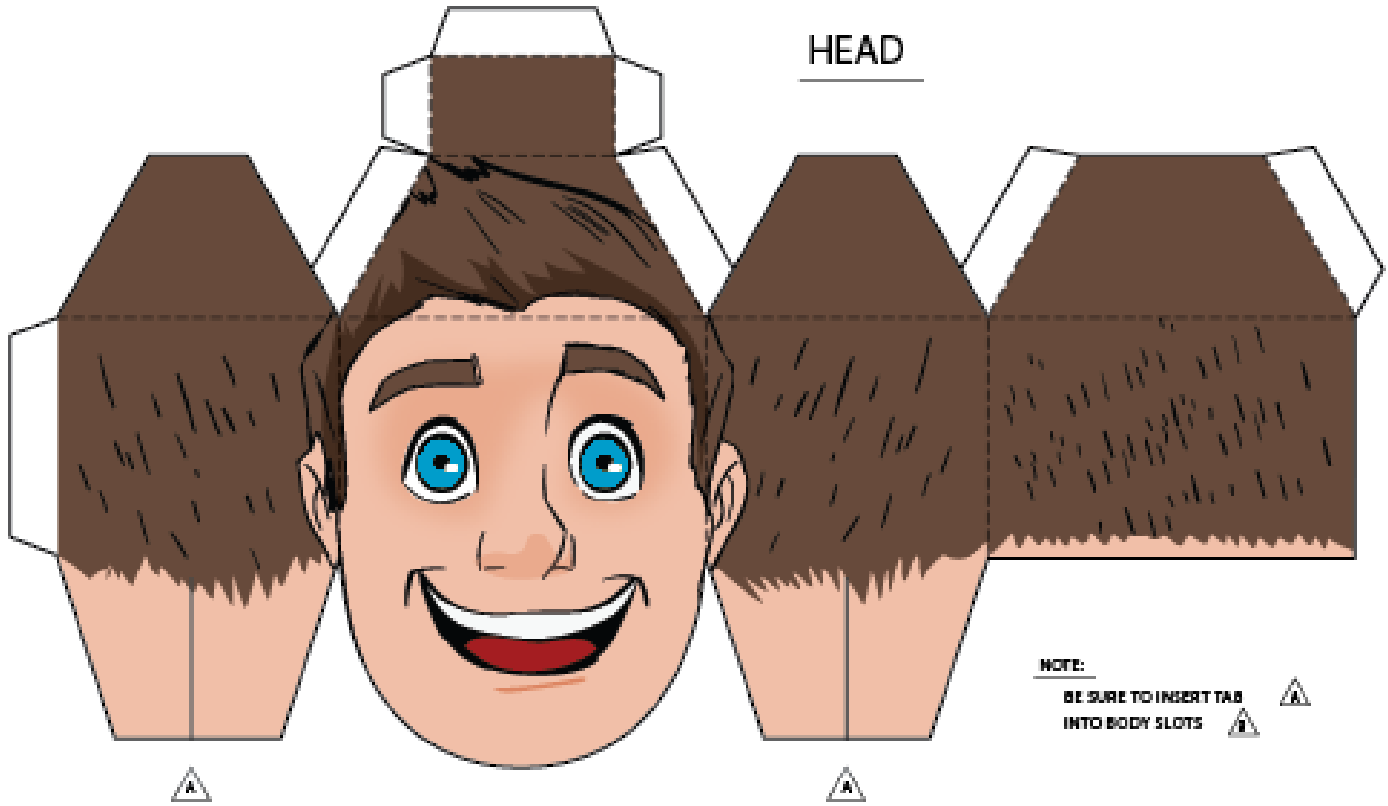
NOTE:
BE SURE TO INSERT TAB INTO BODY SLOTS

KERI - BODY



NOTE:
DO NOT IGNORE THE CUT LINES ON SIDES OF THE BODY. THESE ARE FOR THE ARMS.

HEAD

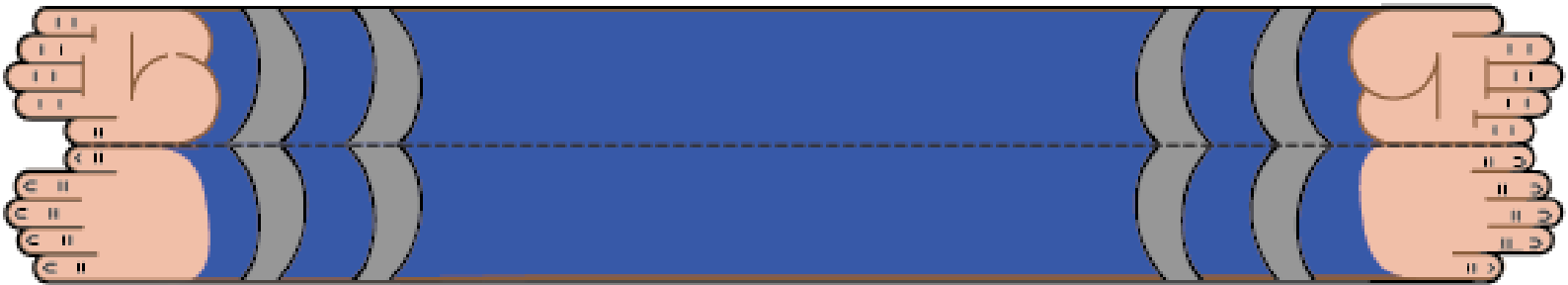


NOTE:

BE SURE TO INSERT TAB
INTO BODY SLOTS



ARMS & PADDLE



NOTE:

FASTEN THE ARMS WITH A
PIECE OF DOUBLE-SIDED TAPE
FOR MAXIMUM SATISFACTION

FILE NAME: PINGPONG.PDF

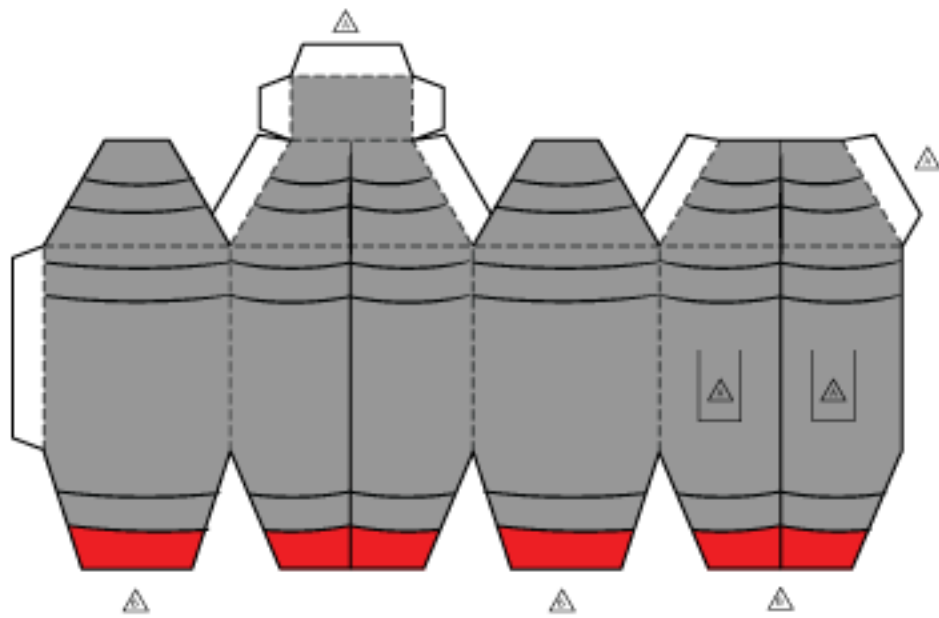
PAPER BUDDY PING PONG SET

ASSEMBLY INSTRUCTIONS

- 1 CUT OUT THE PIECES WITH SCISSORS OR CUTTING KNIFE
- 2 SCORE AND FOLD ALONG THE FOLDING LINES
- 3 USE GLUE OR DOUBLE-SIDED TAPE TO FASTEN THE TABS
- 4 ASSEMBLE THE PAPER BUDDY, APPLY THE HAT OR HEADBAND
- 5 VISIT MAILCHIMP.COM/PAPER-BUDDY FOR MORE ACCESSORIES
- 6 TWEET OR INSTAGRAM #PAPERBUDDY



HOSS - JET PACK



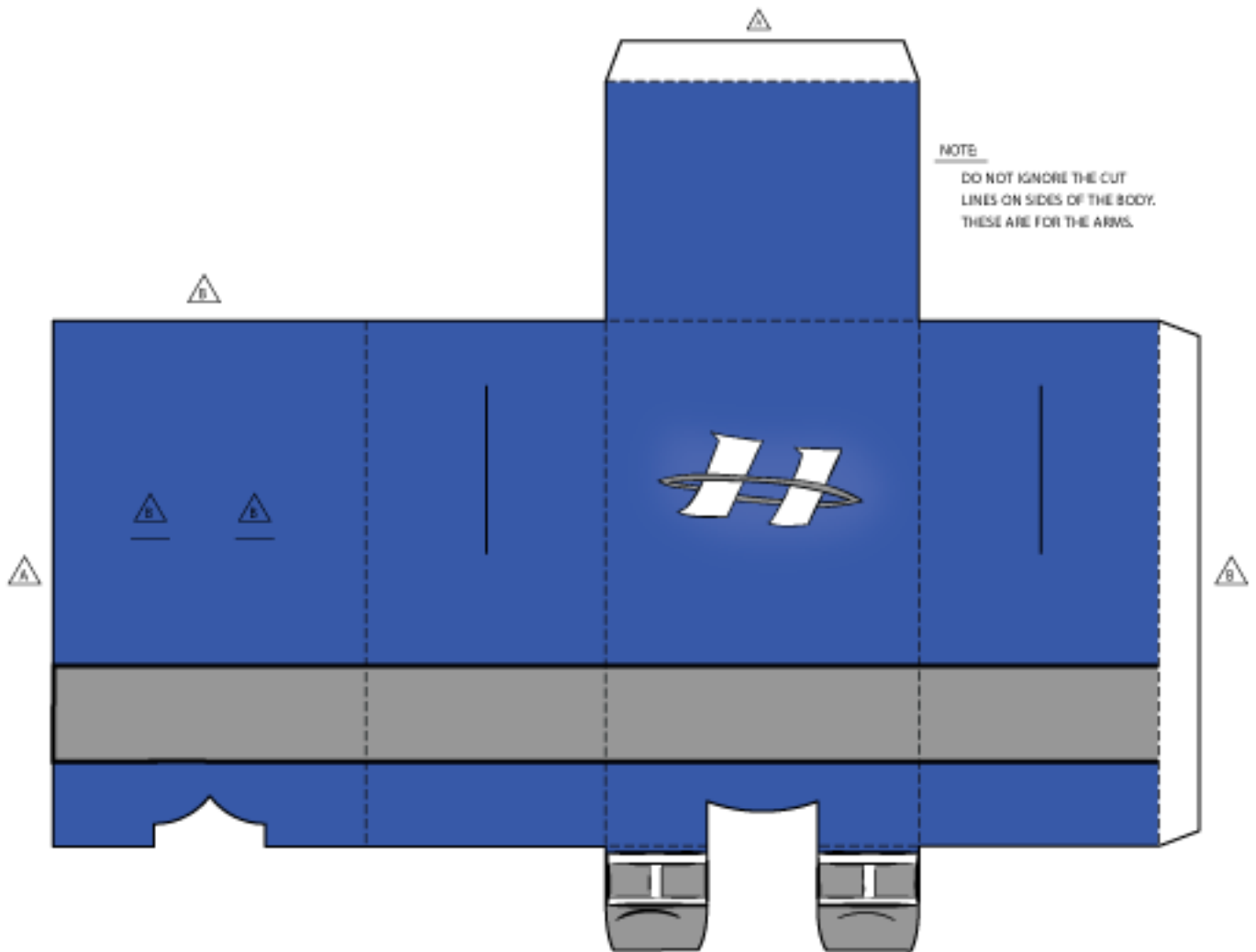
NOTE:

DO NOT IGNORE THE CUT LINES ON BACK OF JET PACK. THESE ARE FOR THE BACK OF BODY.

NOTE:

BE SURE TO INSERT TABS INTO BODY SLOTS.

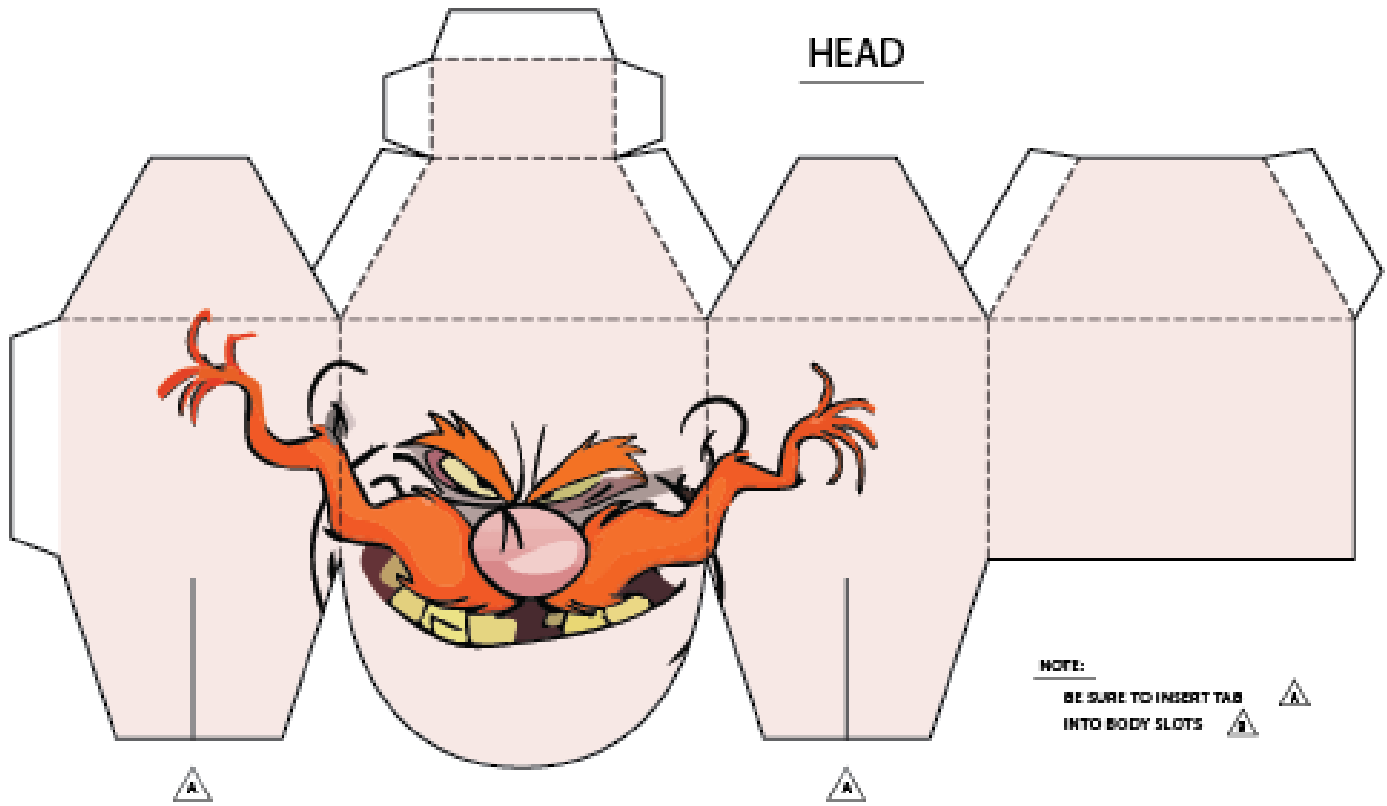
HOSS - BODY



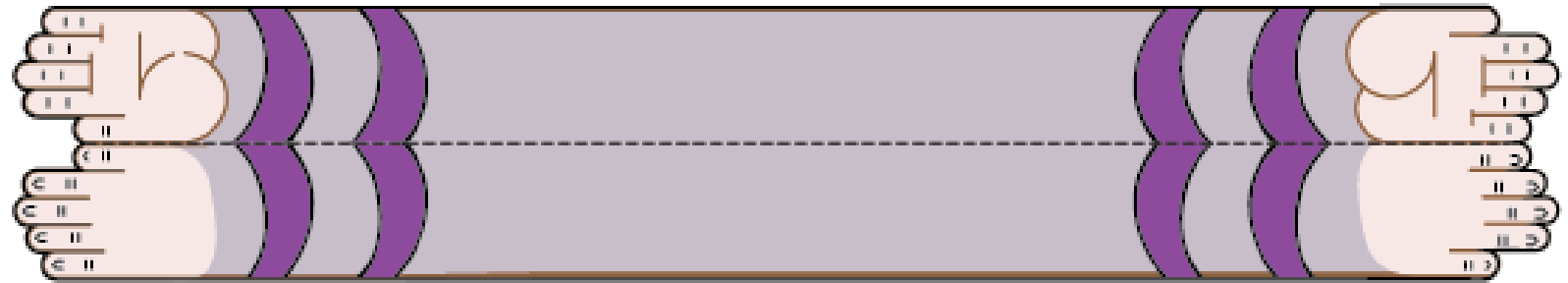
NOTE:

DO NOT IGNORE THE CUT LINES ON SIDES OF THE BODY. THESE ARE FOR THE ARMS.

HEAD



ARMS & PADDLE



NOTE:

PASTE THE ARMS WITH A PIECE OF DOUBLE-SIDED TAPE FOR MAXIMUM SATISFACTION.

FILE NAME: PINGPONG.PDF

PAPER BUDDY PING PONG SET

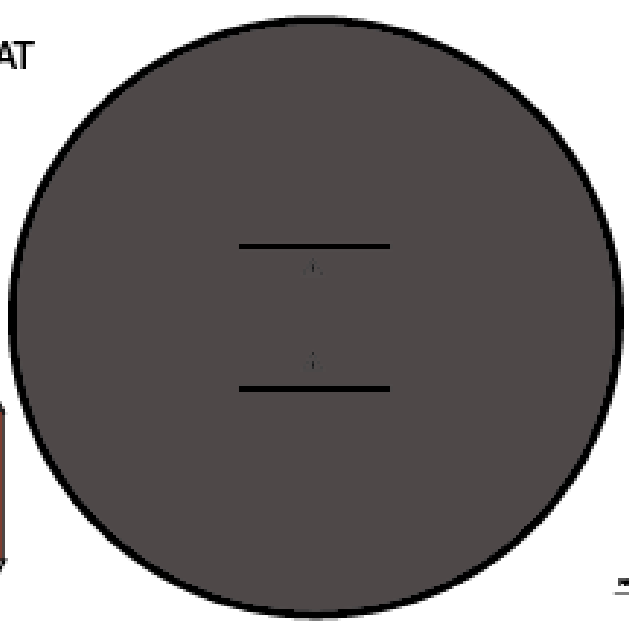
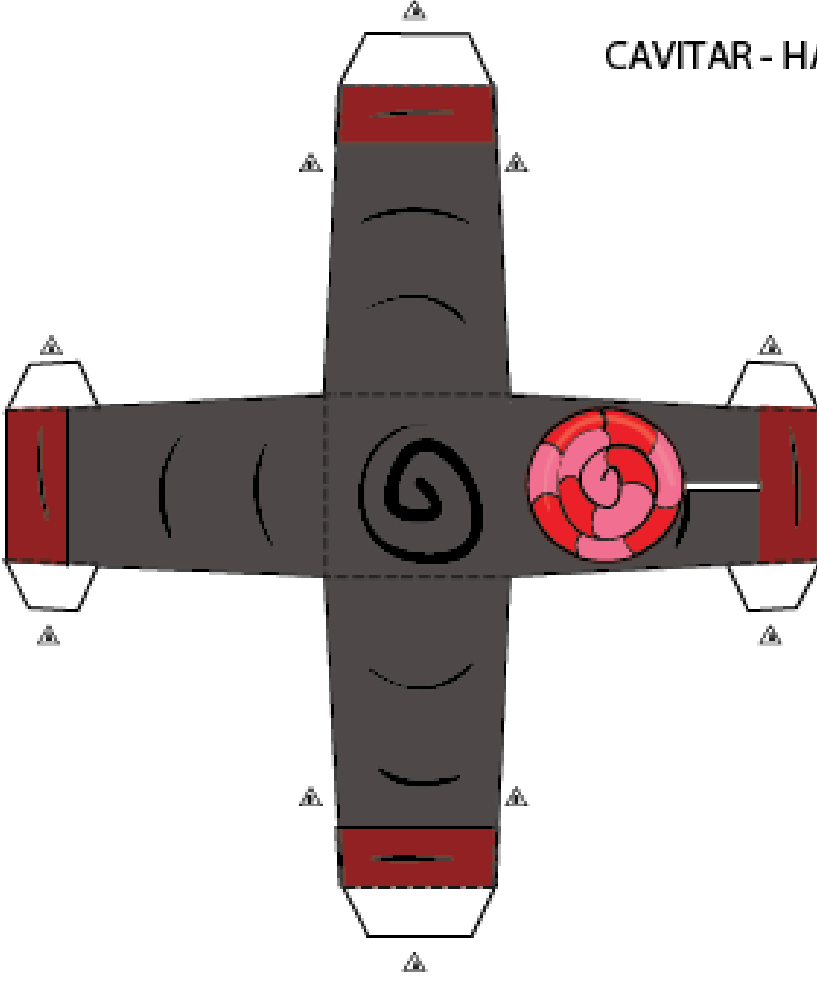
MODEL NO. 01-0003 PAGE 1/2

ASSEMBLY INSTRUCTIONS

- 1 CUT OUT THE PIECES WITH SCISSORS OR CUTTING KNIFE
- 2 SCORE AND FOLD ALONG THE FOLDING LINES
- 3 USE GLUE OR DOUBLE-SIDED TAPE TO FASTEN THE TABS
- 4 ASSEMBLE THE PAPER BUDDY, APPLY THE HAT OR HEADBAND
- 5 VISIT MAILCHIMP.COM/PAPER-BUDDY FOR MORE ACCESSORIES
- 6 TWEET OR INSTAGRAM #PAPERBUDDY



CAVITAR - HAT



NOTE:
BE SURE TO INSERT THE
INTO BODY SLOTS

BODDY

NOTE:
DO NOT IGNORE THE CUT
LINES ON SIDES OF THE BODY.
THESE ARE FOR THE ARMS.

